

PRINTFUL

CUT&SEW T-SHIRT

Print file size for **FRONT AND BACK**

28" × 36"
width height

Print file size for **SLEEVES**

20" × 12"
width height



FILE FORMAT

Please submit your files in **JPG** or **PNG** format.



COLOR

All colors should be in **RGB**.



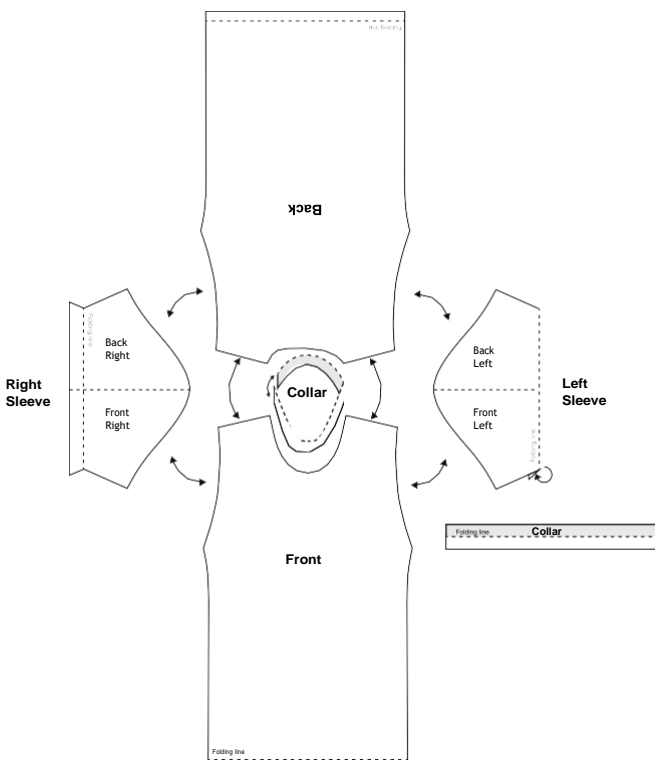
FONTS

All fonts in the print files should be converted to outlines so you don't have to send over the font files.



PLACEMENT

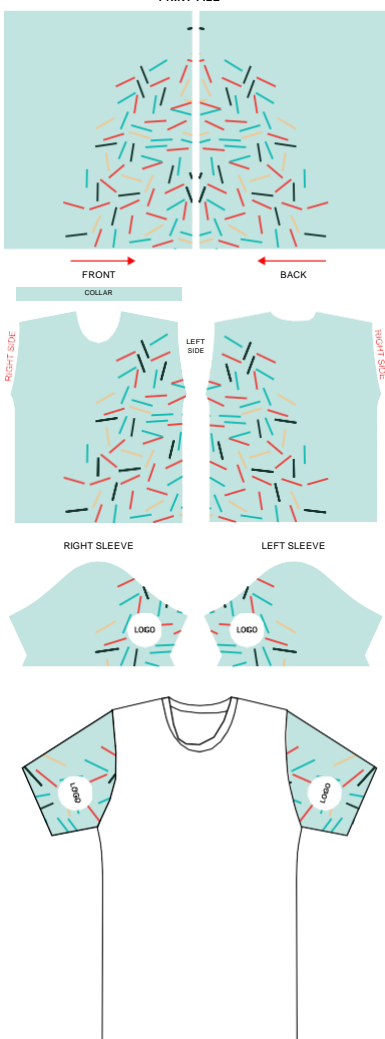
Exact placement is **not possible**. Our T-shirts are cut and sewn and are best when designed with patterns and full bleed images. Text placement will not be precise. Making a seamless image in the front or back is impossible.



NOTE: IF YOU WISH YOUR DESIGN TO MATCH ON SIDES FLIP IMAGE TO MIRROR

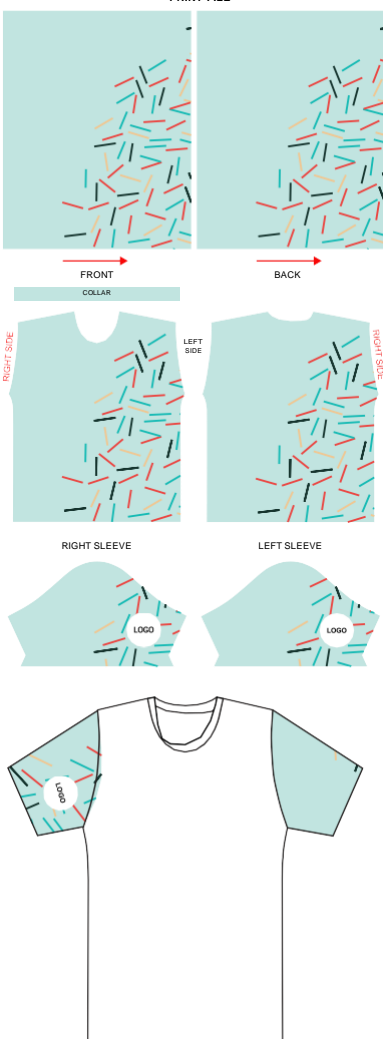
THIS IS HOW T-SHIRT WILL LOOK IF YOU **FLIP** DESIGN TO MIRROR

PRINT FILE



THIS IS HOW T-SHIRT WILL LOOK IF YOU **DON'T** FLIP DESIGN TO MIRROR

PRINT FILE



Care and size label



Instructions on how to prepare a printfile



- 1** **CREATE** new document sized to **Width: 28" x Height: 36"** and **Width: 20" x Height: 12"**
 - Make sure Raster effects are set to **150dpi** or higher
 - Make sure the color space is set to **sRGB**

- 2** **PLACE** raster graphics or create / copy & paste vector graphics within maximum graphic size area.

Pay attention to graphics resolution (see requirements above).



- 3** **EMBED** raster graphics



- 4** **EXPORT**
 1. Choose "File" - "Export"
 2. Rename your file
 3. Choose either **.png** or **.jpeg** as the file format
 4. Click the **"Use Artboards"** checkbox
 5. Click "Export"
 6. Make sure your **resolution is 150dpi** or higher
 7. Make sure the color space is set to **sRGB**
 8. Click **"OK"** to save file



- 1** **OPEN** The Printful templates for this product or **CREATE** new documents

- 2** Create or copy / paste graphics within maximum graphic size area.

Pay attention to graphics resolution.

- 3** **SAVE**
 1. Turn off the guides by using the eye icon tool
 2. Choose File - Save As and Rename your file
 3. Save as .jpeg